

COSTUMES 'Annie' 2018

Congratulations and Welcome to the show!

My name is Lisa Johnson; I am the lead costumer for the show. I am really excited for you all and look forward to working with you in the area of costumes. Prior Lake Players has a pretty extensive costume shop but with a cast this size, your help would be greatly appreciated.

My plan/goal:

- **Leads & most speaking roles**-Costumes will be provided, unless you have your own. Please let me know if this may be the case.
- **Chorus (Orphans, Hooverville, Servants and NYC)**-I am asking the orphans and chorus, if you are able, to provide your own costumes. I have costume suggestions listed below, and the internet has ample images for you to view for additional costume ideas as well. I can send you some pictures via email as well, to give you additional ideas.
- All costumes must be approved by directors on or before Monday 3/12.
- Partial dress rehearsal Thursday March 15, if a full cast rehearsal.

I am more than happy to help anyone with their costumes. If you would like my help, please send me your name, role, dress, shirt and pants size. Please direct your questions or concerns to me, but directors have the final approval. My contact information is Lisa7j@Gmail.com or text 952.457.4742.

All Cast members must provide your own:

- shoes, tights, stockings, anklets, etc.
- Undergarments to allow for costume changes without a changing room. I suggest T-shirt and shorts, unitard, etc.
- Make up

Setting/Time:

- December 1933
- New York City and Washington DC

Orphans-3 outfits, think layered

1. *Pajamas*-White, ivory, or light grey cotton or flannel nightgowns, two piece pajamas, Cotton slips or long johns. Please stick with solids or small, background print. We will be dirtying these up.
2. *Orphan outfit*-dirty/dingy looking patches. Dresses or shirt-skirt combo. Layered with a loose fitting jumper or ill fitted sweater/cardigan. Ill fitted stockings or anklets. Scuffed up Black or brown lace up boots or dance shoes.
3. *Christmas Dress*-A formal dress of any color, 1930's looking with bows or sashes. White anklets and black "Mary Jane" style shoes.

COSTUMES 'Annie' 2018

Hooverville - Chorus

Overall costumes should be dull colored, dingy, worn out, oversized, patches and holes. Scuffed up, lace up boots in brown or black or dance/character shoes

Men/Boys

- Pants, overalls or knickers. (Players has a lot of boy knickers and Henley style shirts)
- Suspenders
- Vests, hats, scarves, and fingerless gloves
- Overcoats
- Cotton, Flannel or Henley shirts

Women/girls

- Skirts or dresses
- Overcoats
- Hats, scarves, fingerless gloves

Servants - Crisp and clean.

Men/boys (Players to provide green vests and bow ties)

- Black shoes and socks
- Black pants
- Extra clean, white, button down shirts

Women/Girls (Players to provide tops, head dress and aprons)

- Black character/dance shoes
- White anklets
- Black skirts ankle length. Players has a number of these and probably have one for you

NYC-Chorus (casual dress, brighter colors)

Men/Boys

- Long pants, button down white shirts and tie
- Dark lace shoes
- Hats, scarves, and gloves
- suits
- Over coats

Women/girls

- Dresses, suits, or skirts
- Overcoats
- Hats and gloves
- Character or dance shoes

General notes

- As roles are being assigned, I plan to be providing the costume pieces you will need.
- Again, the costume shop has ample supply of costumes. Once I am aware of your rehearsal schedule, I will be bringing items to rehearsals for you to try on and assign. I will also be scheduling days and times to meet at our costume shop for your convenience.
- Ladies servants, please email me your top/blouse size as soon as possible.
- French maids, please let me know your dress size as soon as possible. ADD [fish net stockings](#)

COSTUMES 'Annie' 2018

Orphans

PLP Annie Orphans costumes 3 costumes

Tights, character shoes or boots brown or black

#Costumes #Orphans #PLP45 #Annie2018 #PriorLakePlayers #Musicals

<https://www.pinterest.com/pin/532902568397747078/>



Costumes: Hooverville



COSTUMES 'Annie' 2018

Costumes: Maids

Black Skirts, green blouse, black tights and black character shoes



COSTUMES 'Annie' 2018

Costumes: Butler

Black pants, White shirts, green bow ties, green vests, black socks, black shoes

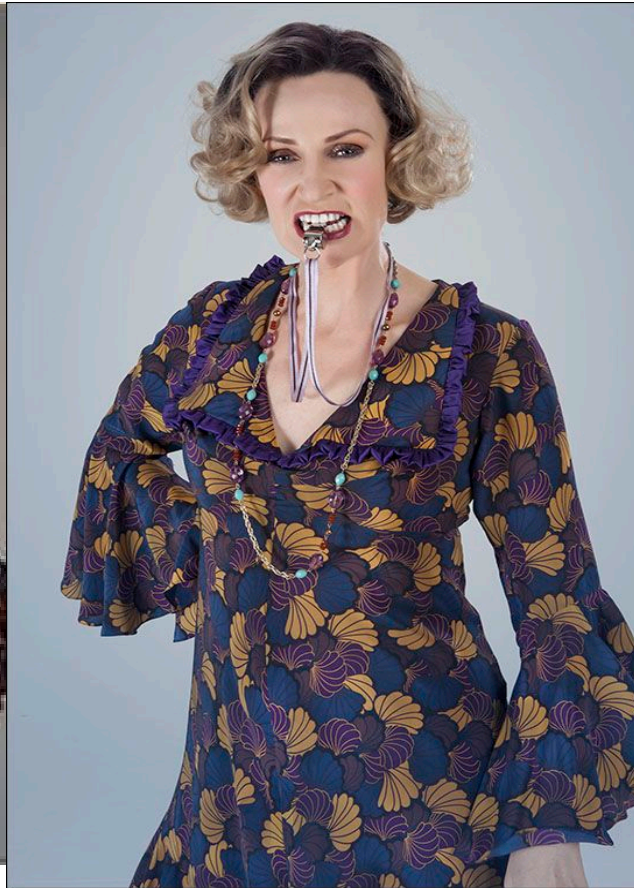


COSTUMES 'Annie' 2018

Leads



COSTUMES 'Annie' 2018

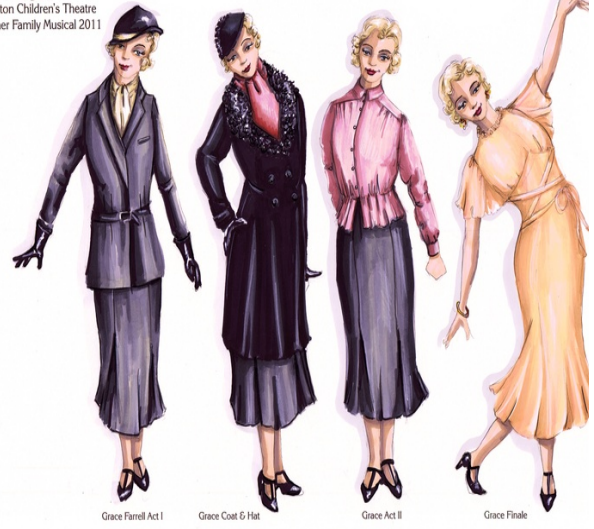


COSTUMES 'Annie' 2018



ANNIE

Lexington Children's Theatre
Summer Family Musical 2011



Grace Farrell Act I

Grace Coat & Hat

Grace Act II

Grace Finale



COSTUMES 'Annie' 2018

NYC



COSTUMES 'Annie' 2018

